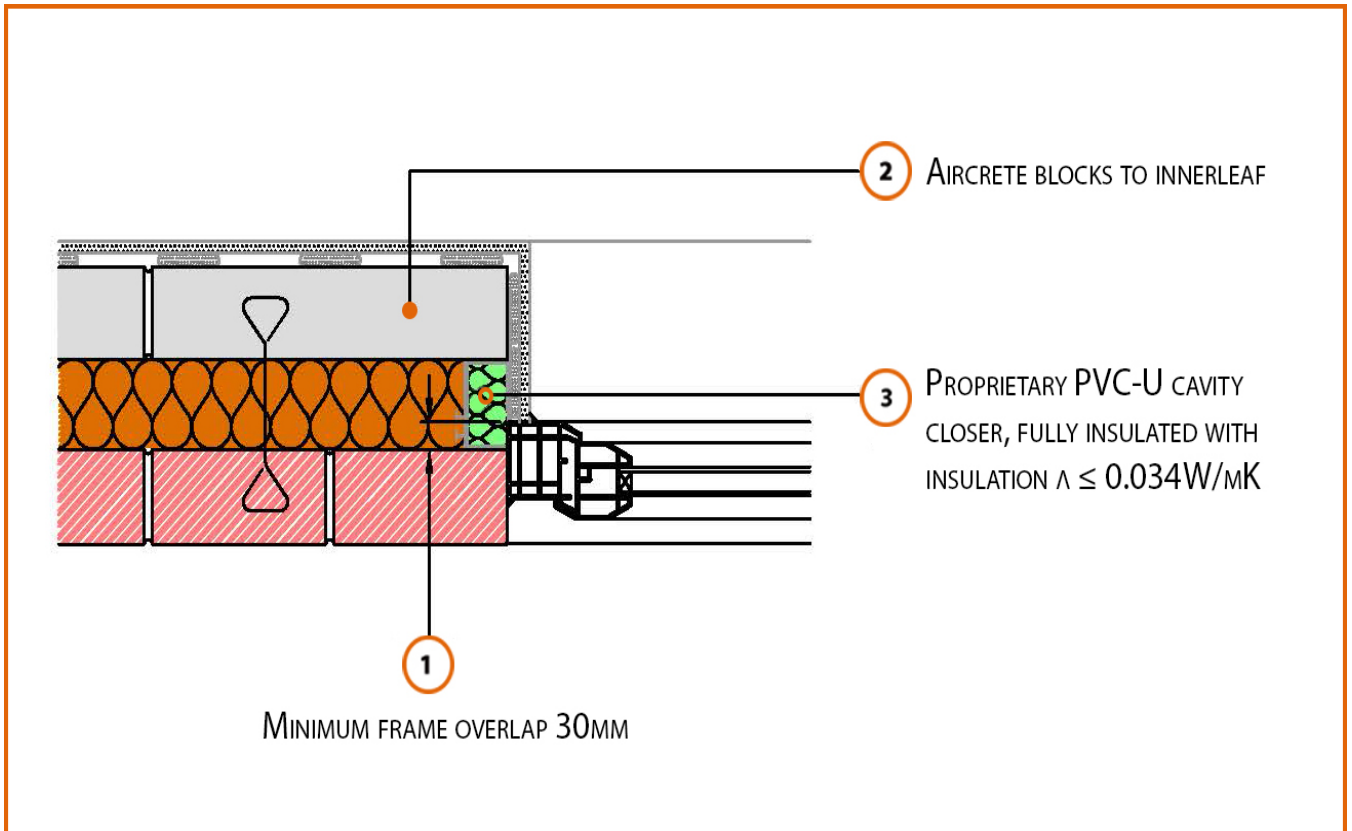


# LABC Registered Construction Details

## Masonry



Registration Number: E4MCFF4



### Build Up

External Masonry Cavity Wall

Masonry Outer Leaf

100mm Aircrete Block Inner Leaf ( $\lambda = 0.11 \text{ W/mK}$ )

Full Fill Insulation

Window Jamb



## Calculated $\psi$ -values

Cavity Insulation	Inner leaf blockwork
	Aircrete Block $\lambda = 0.11$ W/mK
	$\psi$ -value W/mK
100mm $\lambda=0.037$	0.029
150mm $\lambda=0.037$	0.036
100mm $\lambda=0.032$	0.029
150mm $\lambda=0.032$	0.036

## Points to Watch

- A flexible sealant should be used between all interfaces of the internal air barrier and the window / door frame members.
- Cavity should be closed with a proprietary cavity closer or block of insulation.
- Ensure the cavity closer is in contact with the insulation within the cavity and the window / door frame.
- Ensure cavities are kept clean of mortar snots and other debris during construction
- Ensure that the damp proof course is correctly positioned.
- This detail cannot be used if a checked reveal is proposed.